



Petrochemicals



Plastics and Polymers



General Chemicals



Fine Chemicals



Nuclear and Navy



Cryogenic Service



Other Applications

medium: liquids liquids with solid particles gas
cracked gas high viscosity fluids

Single sliding disc
through conduit valve
Soft seating /
type 205-TLV

Single sliding disc through conduit valve Soft seating / type 205-TLV

Slide valve

Ball & plug
valve



Butterfly
valve



Globe valve



Safety Relief
valve



Rinsing
Injection



Tank bottom
valve



Control



Multitray



Sampling
valve



Piston valve



Gate valve



Check valve



Accessories



Actuator



Features

- Welded or cast construction
- Full bore, through conduit design in open position
- Metal gate closing on soft seats
- Operating temperature up to 300°C according to the seat packing material (PTFE, filled PTFE or reinforced aramide, graphite)
- Fixed, recessed seats
- Seats protected by the gate in open position
- Tight shut off in both flow directions (if suitable for the installation)
- Replaceable upstream/downstream body sleeves
- Bolted stuffing box, self-adjusted by means of spring washers
- Steam injection nozzles

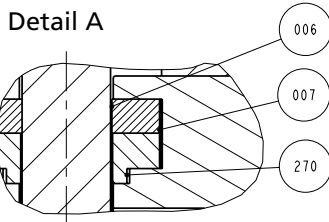
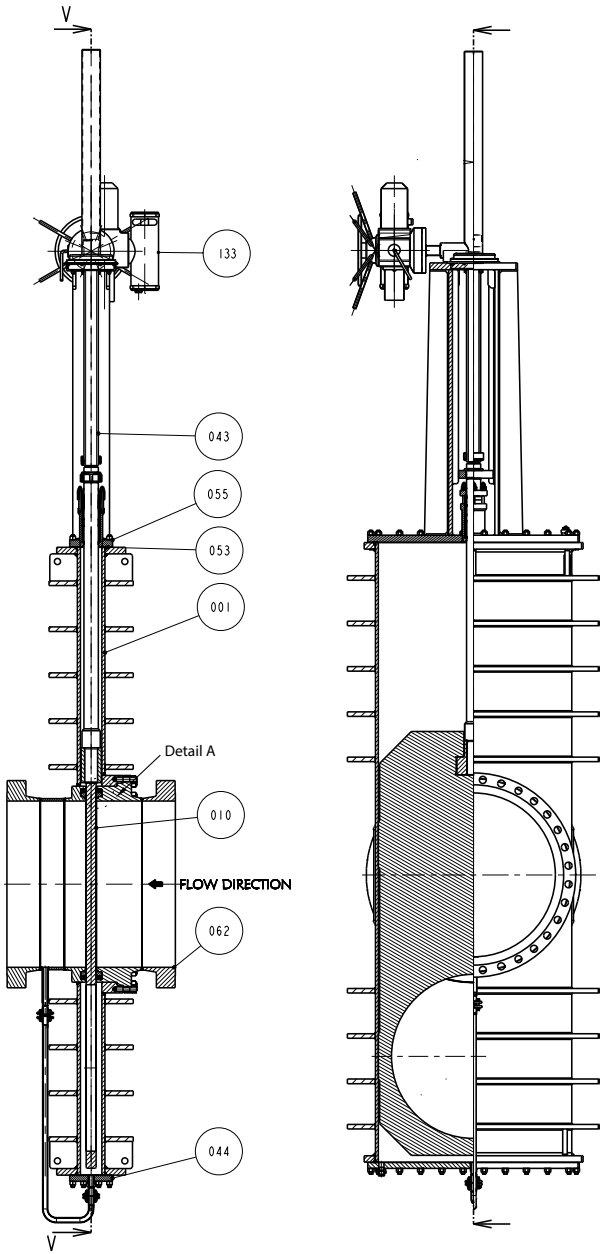
designed &
made in
France

Competitive advantages

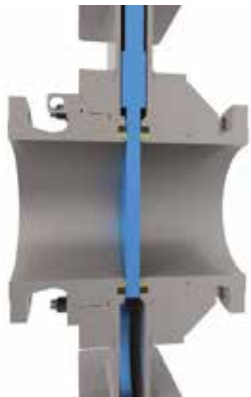
- Full bore, through conduit design
 - ➡ no retention area, no pressure drop
 - ➡ circulation of cleaning devices (pigging) enabled
- Bi-directional flow (if allowed by the application)
 - ➡ security against back pressure in the line
- Gland repackable in service
 - ➡ no production stop for maintenance
- Removable upstream/downstream body sleeves
 - ➡ easier maintenance
- Compact design
 - ➡ easier installation



GUICHON
VALVES



Design of seats tightness



Part n°	Part name	Qty	Material
001	BODY	1	CARBON STEEL
006	SEAT	2	REINFORCED ARAMIDE
007	SEAT GASKET	2	CARBON FIBER + NBR
010	GATE	1	STAINLESS STEEL
043	STEM	1	13% CR
044	REMOVABLE BOTTOM	1	CARBON STEEL
053	BODY GASKET	2	SS/GRAPHITE
055	BONNET	1	CARBON STEEL
062	BODY SLEEVE	1	CARBON STEEL
074A	PACKNG	4	GRAPHITE
074B	PACKING	10	GRAPHITE
133	ELECTRIC ACTUATOR	1	
270	SCRAPER	2	ASTM A439 TYPE D2

Fabrication range (on request)

Size 6 in. (DN150) to 60 in. (DN1500)

Class 150 - 600 (PN 10 to 100)

**according to type*

Main applications

Ethane cracking / Ethylene processes

Steam craking

Plastics & polymers

Delayed coking

Chemical processes

OPTIONS

- Other materials
- Other pressure classes
- Seats protected by gate scraper
- Reverse slab
- Hard facing of gate seating surfaces
- Removable bottom for body cleaning
- Additional purge/cleaning nozzles (for steam or other fluid)
- Reduced seats bore (shorter face-to-face)
- Fire safe design
- Gland leak detector
- Pneumatic, electric or hydraulic actuation
- Emergency handwheel on pneumatic actuator
- Hand operated version mounted on ISO base for retrofitted motor operation
- Dry air operated pneumatic actuator
- Pneumatic actuator locking in closed position
- Emergency handwheel locking
- Special painting (according to your specifications)

Single sliding disc
through conduit valve
Soft seating / type 205-TLV



Member of VALCO GROUP

26 rue Paul Girod – Z.I. Bissy • 73 000 Chambéry • France

Tél : + 33 (0)4 79 44 59 00 • Fax : + 33 (0)4 79 44 59 01

E-mail : info@guichon-valco.com • www.guichon.com